



台南企業股份有限公司

TAINAN ENTERPRISES CO., LTD.

2024

Investor Conference



台南企業股份有限公司  
TAINAN ENTERPRISES CO., LTD.

# SAFE HARBOR NOTICE

- The content and related information in this briefing report and the synchronous announcement are sourced from Tainan enterprises inner and outer material, including the operation result, financial situation and the business development, et cetera.
- No financial forecasting is released by Tainan enterprises . Discrepancy may be existed between the actual result in the future and the estimated opinion to the company operation and business developing subjects indicated in this briefing report with respect to the financial, business and Q&A part. The causes of the discrepancy may include the variation of market needs, price fluctuation, competition activities, international economic situation, exchange rate fluctuation, upper and downer stream supply chain, and any other risk factors that beyond Tainan enterprises control.
- The prospects to the future in this briefing report reflect Tainan enterprises vision of future. Tainan enterprises is not responsible for any notification or update with regard to any change or adjustment to these prospects in the future.



# TAINAN

## 2024 COMPANY PROFILE

# CONTENT



MANUFACTURE  
CAPACITY

TECHNOLOGY  
UPGRADE

1 ABOUT US

2

3 FINANCIAL

4

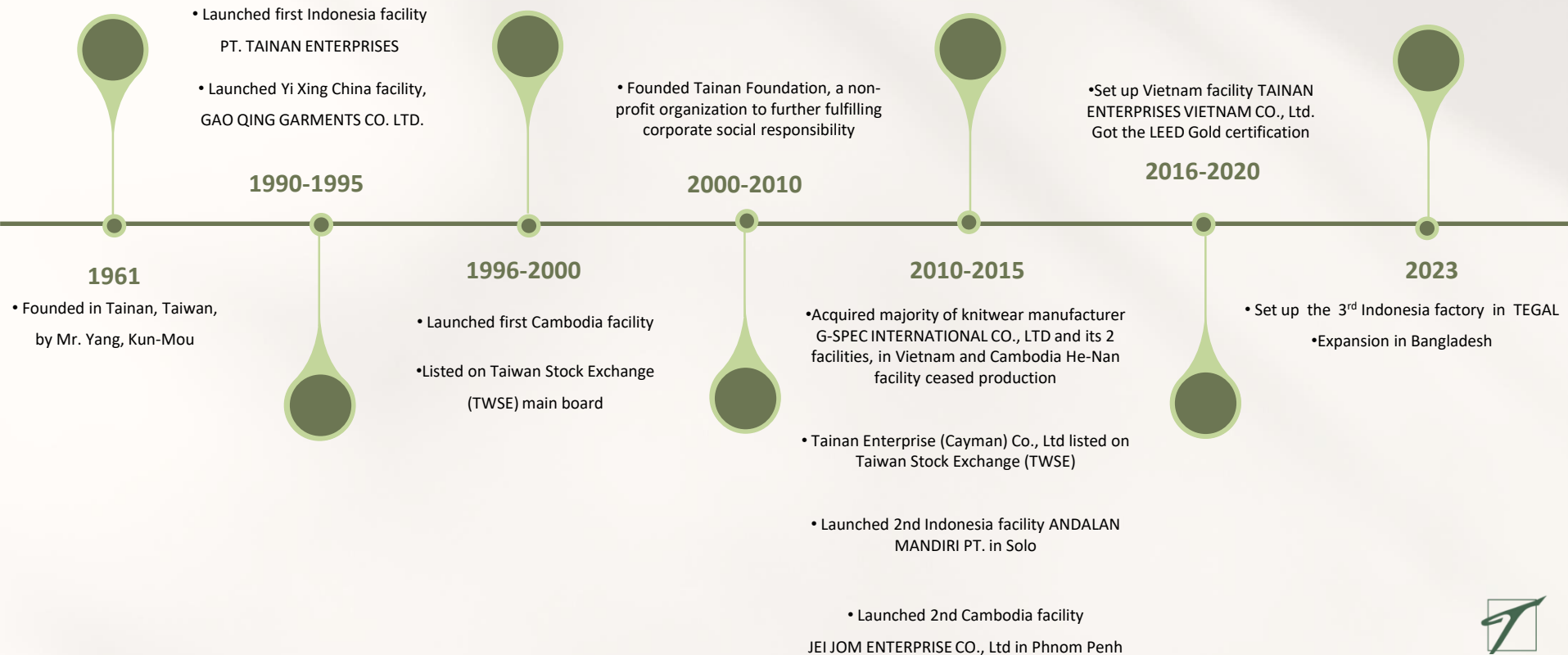
5 SUSTAINABILITY &  
SOCIAL RESPONSIBILITY



# 1 ABOUT US



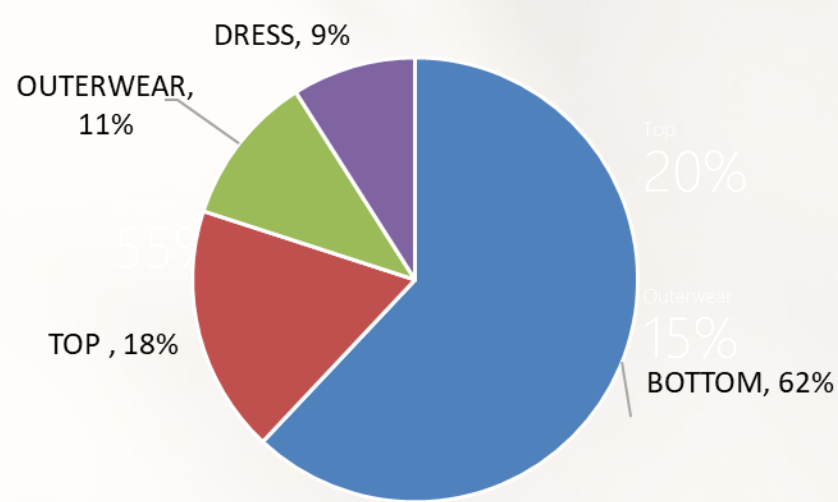
# OUR STORY



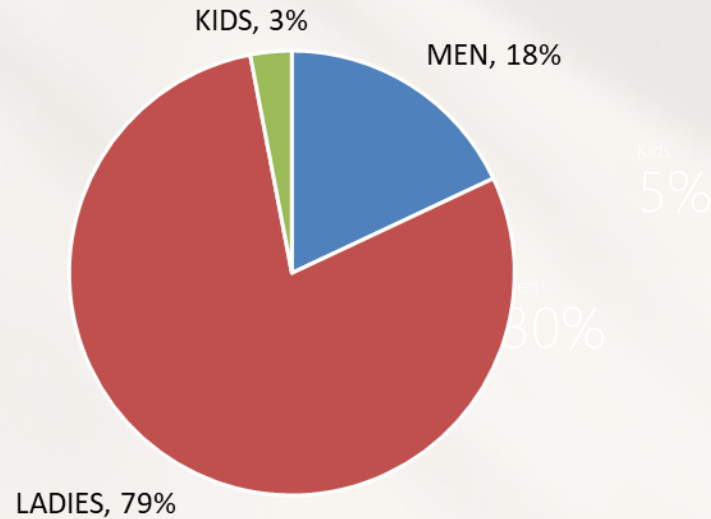
# OUR CLIENTS



# COMPANY METRICS



By Product Category

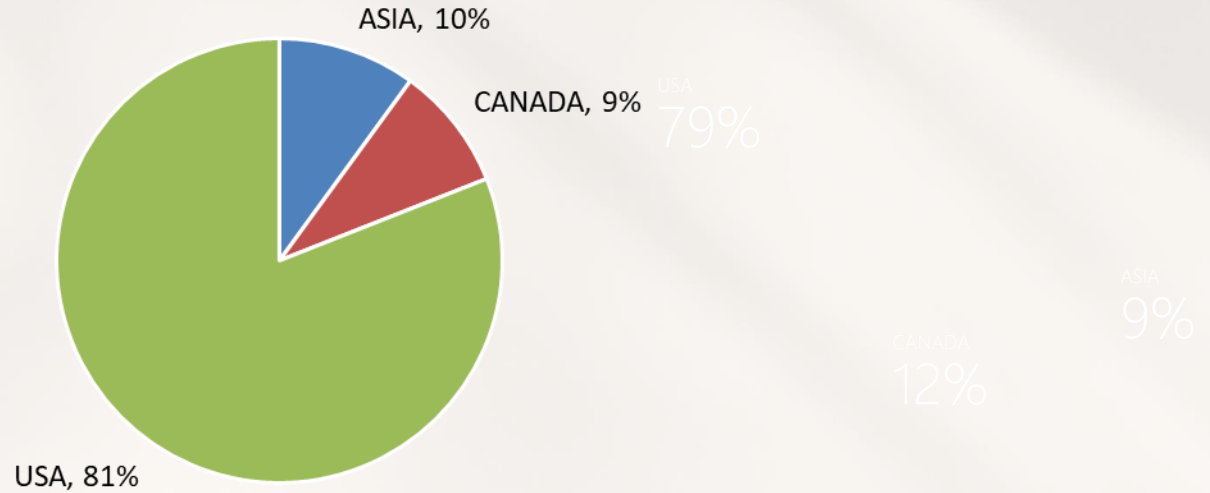


By Gender





# COMPANY METRICS



Global Market Share



# 2 MANUFACTURE CAPACITY



# TAINAN FACILITY

## Bangladesh

- Denim
- Sports wear

## Vietnam

- Woven bottom/top
- Light outerwear
- Athleisure apparel

## Cambodia TC1+TC3

- In-house laundry facility
- Woven bottom/top
- Light outerwear
- Athleisure apparel

## Cambodia GIN SOVANN

- Performance active wear
- Athleisure apparel
- Cut-and-Sew knits
- Sleepwear
- Loungewear

## China

- Novelty items
- Complicated craftsmanship
- Embellishment
- Fast turn around
- Development center

## Taiwan

- R&D sample room
- Active wear
- Small size order

## Indonesia

- Outerwear
- Jacket
- Blouse
- Refined and tailored garments
- Denim
- Affiliate laundry facility

## Taiwan

- 2 LINES
- 20,000 pcs/mth

## China

- 18 LINES
- 200,000 pcs/mth

## Indonesia

- **JAKARTA** 40 LINES
- 360,000 pcs/mth

- **SOLO 1** 24 LINES
- **SOLO 2** 22 LINES
- 420,000 pcs/mth

## Cambodia

- **TC1+TC3** 56 LINES
- 600,000 pcs/mth

- **GIN SOVANN** 20 LINES
- 300,000 pcs/mth

## Vietnam

- 26 LINES
- 300,000 pcs/mth

## Bangladesh

- Knit + Woven
- 1000,000 pcs/mth

- Woven + Denim
- 800,000 pcs/mth



# FACTORY APPROVED BY



# MODERNIZED PROCESS FLOW

Hanger System - Indonesia solo



U-Shape Conveyer Cambodia



RFID System All Factories





# BOTTOM PRODUCT AUTOMATION

*Other automation machines and many more*



Automatic Template Machine



Automatic Pocket Attaching Machine



Automatic Folding & Heating Machine



Automatic Welt Pocket Machine



Automatic Belt Loop Machine



Fancy Stitch Machine



# WIDE USAGE OF TEMPLATE MACHINE

*Mainly for Tops*

Template Design



Template Usage



# INSPECTION & TEST

*Fabric Defect Record System*



*In-house Lab Test*



*Scan & Pack System*





# 3 Financial



# Consolidated Financial Results (I)

Year	Revenue		Gross Profit	Operating Income	Pre-Tax Income	Net Income	EPS
	Amount (NT\$m)	YOY (%)	(NT\$m)	(NT\$m)	(NT\$m)	(NT\$m)	(NT\$)
2019	7,660	(8.00)	1,065	74	66	80	0.55
2020	5,970	(22.00)	670	(327)	(380)	(355)	(2.45)
2021	5,761	(3.5)	776	(156)	(126)	(135)	(0.92)
2022	7,529	30.69	1,219	235	347	301	2.06
2023	6,508	(13.56)	1,162	286	347	301	2.13
2024Q1	2,313		439	259	237	210	1.44

## Consolidated Financial Results (II)

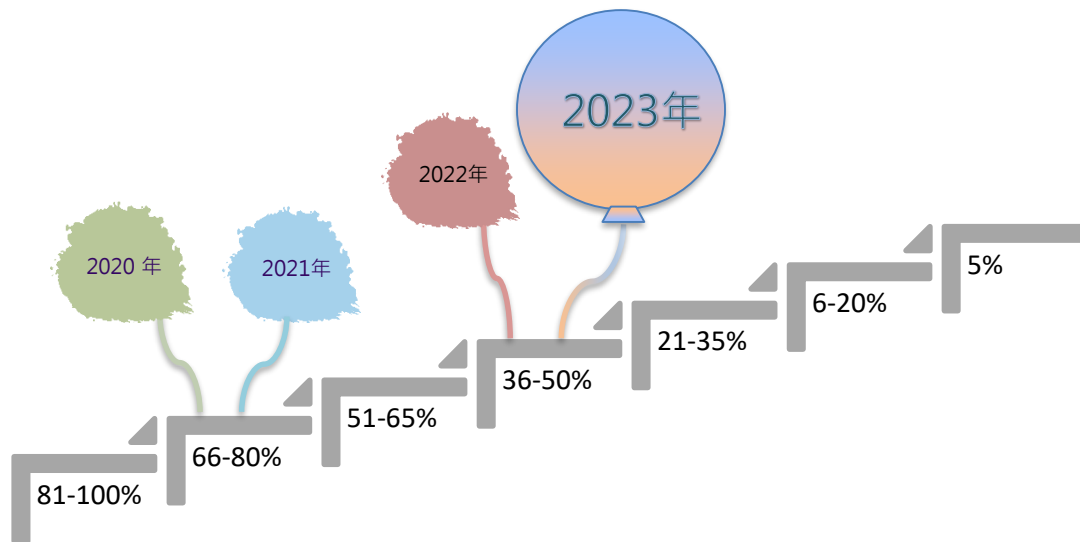
Year	Profitability		
	Gross Margin (%)	Operating Margin (%)	Net Margin (%)
2019	13.91	0.97	1.05
2020	11.23	(5.49)	(6.37)
2021	13.47	(2.7)	(2.34)
2022	16.19	3.13	3.99
2023	17.86	4.40	5.53

## Dividend Policy

- According to the corporate law & the company' s regulation
- Depend on the company' s short & long term operation plan and profitability
- Depend on the company' s cash position

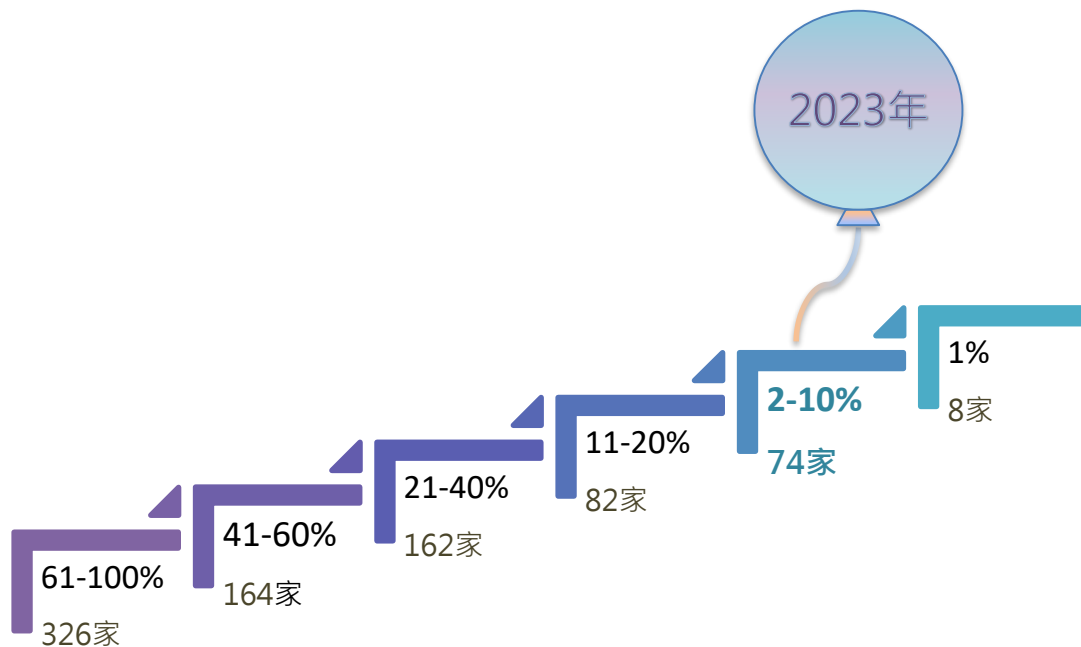
Year	EPS (NT\$)	Cash dividend (NT\$/share)	Stock dividend (NT\$/share)	Payout ratio (%)
2019	0.55	0.5	0.0	90.91
2020	(2.45)	0.2	0.0	-
2021	(0.92)	0.1	0.0	-
2022	2.06	1	0.0	48.54
2023	2.13	1.2	0.0	56.33

# The 10<sup>th</sup> (2023) Corporate Governance Evaluation



# The 10<sup>th</sup> (2023) Corporate Governance Evaluation-

## Category ranking gap with market value less than 5 billion



市值未達50億元共816家

# 4 TECHNOLOGY UPGRADE



# LASER CUTTER IN FASHION

*Indonesia Jakarta Laser Cutter*



## Equipment Advancement

✓ Super large-format processing area:  
1800mm × 1000mm

## Appliance Fabric

✓ Recommended for use --- Man-Made Fiber:  
Ponte 、 PU 、 Suede 、 Faux fur 、 T/R...



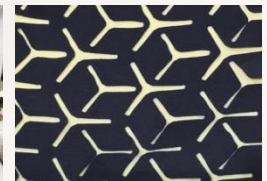
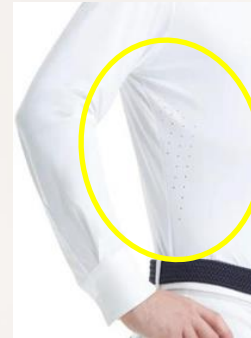
-Ponte-  
-Flower & Scallop-



-Faux leather-  
-Dots & Scallop-



-Polyester Crepe-  
-Geometric Figure-





# 3D TECHNOLOGY



## CLO-SET

Instantly review changes as any modifications to 2D patterns, colors, textures and finishing details are immediately simulated.



## Automatic Fabric Analysis

Accurately emulate drape-sensitive fabrics such as lightweight woven and jerseys with various material properties.

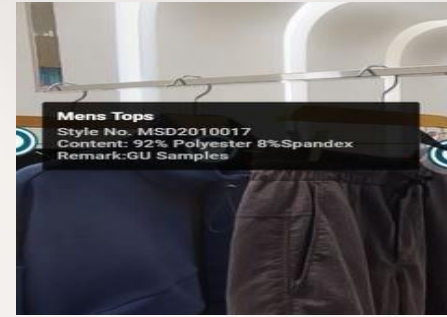


# VIRTUAL SHOWROOM



## Tainan 3D Showroom

A virtual space where customers can interact with all the production without the constraints of the physical environment



## Samples



## Fabrics



## Virtual Runway



# SUSTAINABILITY & SOCIAL RESPONSIBILITY



# TAINAN ENTERPRISES TARGET

**30%** CO<sub>2</sub>e Reduction Per Revenue By 2030



## Rooftop Solar



## Biomass Energy



## Renewable Energy Certificates



## Energy Management System



Geothermal Electric Power Station





# 100% WASTEWATER RECYCLED

## EFFLUENT TREATMENT

*Cambodia In-house Laundry*

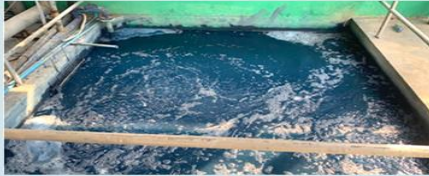
Discharged Wastewater



Biological Treatment



Chemical Treatment



Biological Sedimentation Tank



➤ 100% Wastewater Recycled

Ozone Bleaching



Reverse Osmosis



Final Recycled Water



# WOMEN EMPOWERMENT PROJECTS

Health education, Financial planning guidance,  
Communication & problem solving trainings



**HERproject**  
Introduced to Indonesia,  
Vietnam factory

Indonesia factory P.A.C.E opening





# CORPORATE SOCIAL RESPONSIBLE

1



Sponsorship of the refurbishment of Hayashi Dept. Store.

2



The Barclay Memorial Park is the Gold Winner of FIABCI World Prix d' Excellence Awards in the category of Rehabilitation/ conservation.

3



Refurbishment of Taiwan old magistrate's office.

4



Cambodia factory giving back to the society.





# CONTACT US

<https://www.eng.tai-nan.com/>

## TAIWAN OFFICE

15F, No. 15-1,  
Han-Chou South RD., Sec 1,  
Taipei, Taiwan 100